
MAR TECH ENGINEERING, INC.

Corporate Profile

350 DeSiard Plaza Drive
Monroe, Louisiana 71203
(318)345-3075 Phone
(318)345-3076 Fax





PRESIDENT'S LETTER

T*o succeed in today's competitive industrial world we must understand our clients' goals and concerns. Projects are driven many times by tight schedules and very trim budgets, creating the need for engineering services that are delivered on time and with a high degree of accuracy.*

Mar Tech's commitment to high quality engineering documents and the drive to meet or exceed standards has provided us with a growing acceptance in the industrial world. We have expanded the industries we serve beyond pulp and paper to include wood products, chemical and power plants.

Mar Tech's goal is to develop a successful relationship with each client based on mutual trust. We strive to create and build the necessary elements to form this type of relationship.

We appreciate the opportunity to present Mar Tech through the pages of this brochure and look forward to working with you on future projects.

Michael Bell

Michael Bell
President, Mar Tech Engineering





This brochure is designed to provide the potential client with information related to the diverse capabilities of Mar Tech Engineering, as well as its general philosophy and commitment to industry. Mar Tech will gladly provide more specific information on process capabilities, project experience, personnel and unique services should any be required.

Overview

Capabilities

Partial Client Listing

Project Organization

Projects

CONTENTS



Mar Tech Engineering was founded to provide an extension of a plant's engineering department. Past projects include upgrades of existing systems, retrofits of existing systems with new equipment and greenfield installations. We have worked to gather capable, proficient individuals to effectively manage and engineer projects. Standards, design procedures and quality checks contribute to the uniformity of design and drawings and provide our clients a valuable service.

Mar Tech Engineering is committed to the service of our clients' needs. We strive to efficiently provide quality drawings, specifications and studies to allow for smooth project installations. Our staff continuously upgrades its knowledge to keep technologically current on equipment and systems. Continuing education, research of relevant literature, interaction with industry professionals and suppliers, and strict quality control allow us to provide high quality engineering services with continual improvements in the pursuit of excellence.

Major Milestones

Founded in 1982 as a Mechanical/Process Engineering Firm

Added Civil/Structural Capabilities in 1984

Added Instrumentation and Electrical Capabilities in 1987

Began Use of AutoCAD to Modernize Drafting Capabilities in 1988

Moved to Present Modern Facilities in 1990

Completed Engineering of \$15 Million Project in 1994

Completed Engineering of \$20 Million Project in 1995

OVERVIEW



Mar Tech's primary expertise is the complete detailed design of new systems, rebuilds and retrofits. We have the resources to provide partial or complete engineering services according to our clients' needs.

CAPABILITIES

Engineering Disciplines

Process

Mechanical

Civil/Structural

Electrical

Instrumentation

Industries Served

Pulp and Paper

Lumber Mills

OSB Plants

Plywood Plants

Chemical Plants

Petroleum Refineries

Power

Additional Services

Engineering Studies

Project Cost Estimates

Computer Aided Drafting

Documentation of Existing Systems

Project Management

Field Engineering

Process Safety Management

HAZOP Reviews



A partial listing of clients we have served along with the facility locations is provided below. We will be happy to provide you with more information or references upon request.

PARTIAL CLIENT LISTING

Arizona Chemical Company

Spring Hill, Louisiana
Oakdale, Louisiana
Panama City, Florida

Babcock-BSH

Germany

Baker Process

Salt Lake City, Utah

Beloit Corporation

Jacksonville, Florida

Borden Packaging & Industrial Products

Demopolis, Alabama

Bowater Newsprint

Grenada, Mississippi

Cajun Electric Power Cooperative, Inc.

New Roads, Louisiana

Domtar Industries

Ashdown, Arkansas

Dupont, Inc.

New Johnsonville, Tennessee

Georgia-Pacific Corporation

Pennington, Alabama
Crossett, Arkansas
Pt. Hudson, Louisiana

International Paper

Bastrop, Louisiana
Pineville, Louisiana
Mansfield, Louisiana
Pine Bluff, Arkansas
Selma, Alabama
Prattville, Alabama
Natchez, Mississippi

Mississippi River Corporation

Natchez, Mississippi

Packaging Corporation of America

Counce, Tennessee

Pennzoil-Quaker State Products

Shreveport, Louisiana

Potlatch Corporation

McGehee, Arkansas

Procter & Gamble

Cape Girardeau, Missouri

Riverwood International

West Monroe, Louisiana

Rouse Rubber Industries, Inc.

Vicksburg, Mississippi

Southern Cellulose Company

Chattanooga, Tennessee

St. Laurent Forest Products

West Point, West Virginia

Temple-Inland Forest Products Company

Diboll, Texas
Hope, Arkansas

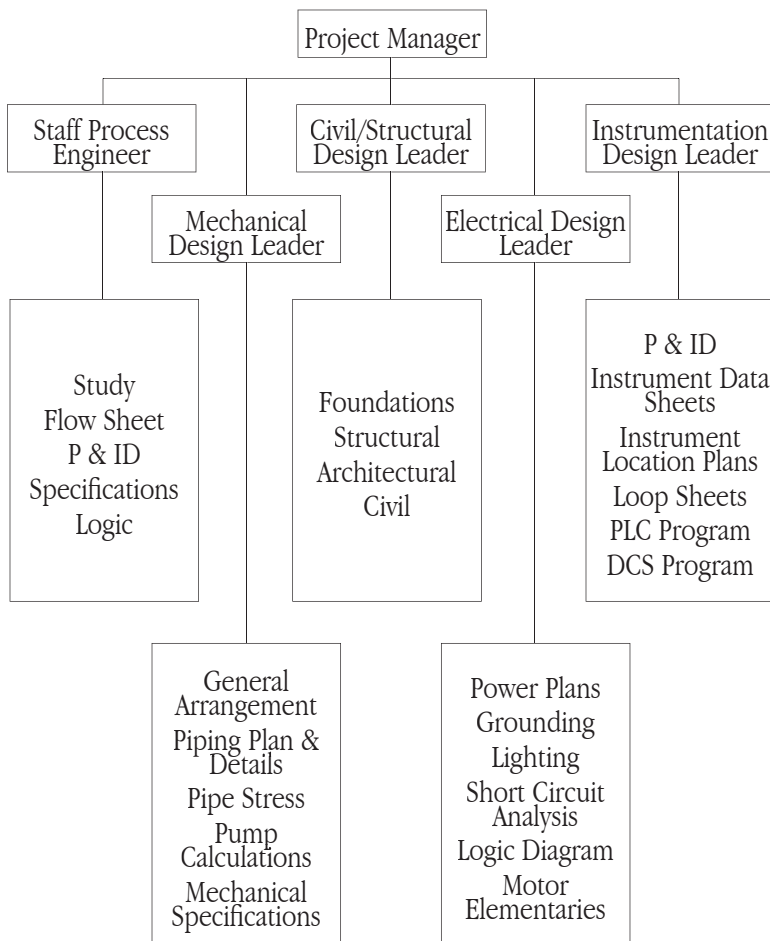
Temple-Inland Paperboard Specialty Company

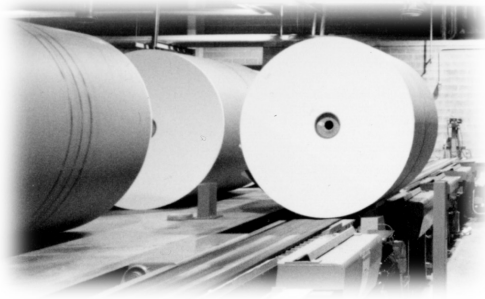
Silsbee, Texas



PROJECT ORGANIZATION

The typical project is organized around the discipline design leaders. The design leaders utilize additional engineers, designers, and CAD operators, etc., as necessary to accomplish the work. The project manager organizes the project to deliver the desired design documents within the engineering budget and maintains the primary contact with the client and vendors to insure a smooth flow of information. Smaller projects often have a single design engineer handling all client contact, design, and engineering to efficiently complete the project.





PROJECTS

The following constitutes a general sampling of projects engineered by Mar Tech. The costs are approximate construction amounts included to indicate the size of the projects. We will be happy to provide more detailed information on projects in specific industries or specific types of projects upon request.

Job Title	Cost
Additives Tank Farm	\$7,000,000
MACT-I Cluster Rule Revisions	\$10,000,000
ECF Bleaching Revisions	\$7,000,000
Wet Lapp Machine	\$4,000,000
Package Boilers(several)	\$1,500,000
Extruder Coating Facility	\$20,000,000
Sawmill Modernization	\$5,500,000
Sawmill Log Merchandising Expansion	\$4,000,000
Thermal Oxidizer System	\$1,500,000
Salt Evaporator & Dryer Plant	\$15,000,000
Pulp Mill Upgrade	\$1,500,000
Coal Tunnel Ventilation	\$375,000
Chip Dumper	\$250,000
Slasher Deck Rebuild	\$300,000
Portal Crane Installation	\$225,000
Chip Screen Replacement	\$275,000
Pulp Mill/Paper Machine Optimization	\$3,100,000
Blow Heat Modifications(several) 1994	\$1,000,000



PROJECTS

LTV Evaporators DCS Conversion	\$730,000
NCG System Conversion(several)	\$1,100,000
Gyrocleaner System	\$825,000
Refiners Upgrade	\$975,000
Starch Cooker System	\$1,200,000
BLRBAC Recovery Boiler Modifications(several)	\$1,000,000
Cold Caustic Extraction Stage	\$1,500,000
E/O Bleaching System	\$935,000
Sequential Chlorination	\$500,000
Liquor Storage Facilities	\$1,750,000
Lime Mud Filter	\$950,000
Effluent Clarifier	\$1,200,000
Bleach Plant Scrubber System	\$7,500,000
Rotary Filter Installation	\$1,200,000
Slaker Replacement	\$350,000
Process Safety Management Documentation	\$350,000
Retention Aid System	\$350,000
Wet Precipitator System	\$5,000,000
Bleach Plant Scrubber	\$5,000,000
Groundwood Bleach	\$1,500,000
Converting Modifications	\$750,000