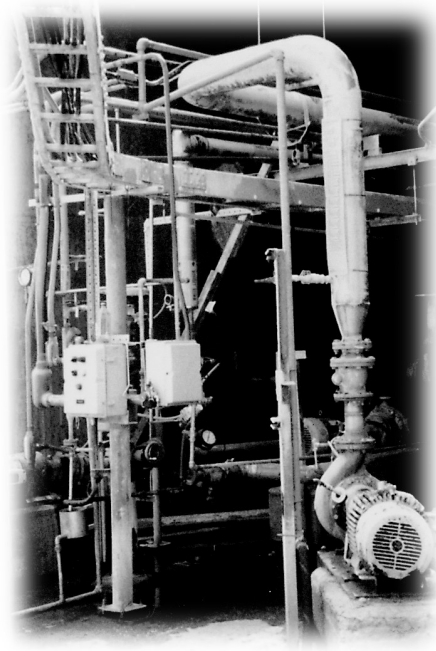


*Chemical Profile*



---

350 DeSiard Plaza Drive  
Monroe, Louisiana 71203  
(318)345-3075 Phone  
(318)345-3076 Fax



## PRESIDENT'S LETTER

**T***o succeed in today's competitive industrial world we must understand our clients' goals and concerns. Projects are driven many times by tight schedules and very trim budgets, creating the need for engineering services that are delivered on time and with a high degree of accuracy.*

*Mar Tech's commitment to high quality engineering documents and the drive to meet or exceed standards has provided us with a growing acceptance in the industrial world. We have expanded the industries we serve beyond pulp and paper to include wood products, chemical and power plants.*

*Mar Tech's goal is to develop a successful relationship with each client based on mutual trust. We strive to create and build the necessary elements to form this type of relationship.*

*We appreciate the opportunity to present Mar Tech through the pages of this brochure and look forward to working with you on future projects.*

*Michael Bell*

Michael Bell  
President, Mar Tech Engineering



**T**his brochure is designed to provide the potential client with information related to the diverse capabilities of Mar Tech Engineering, as well as its general philosophy and commitment to industry. Mar Tech will gladly provide more specific information on process capabilities, project experience, personnel and unique services should any be required.

*Overview*

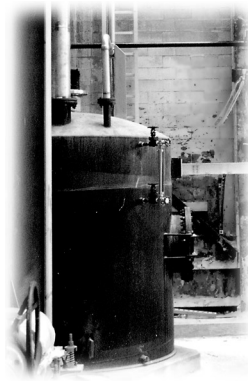
*Capabilities*

*Partial Client Listing*

*Project Organization*

*Projects*

## CONTENTS



**M**ar Tech Engineering was founded to provide an extension of a plant's engineering department. Past projects include upgrades of existing systems, retrofits of existing systems with new equipment and greenfield installations. We have worked to gather capable, proficient individuals to effectively manage and engineer projects. Standards, design procedures and quality checks contribute to the uniformity of design and drawings and provide our clients a valuable service.

Mar Tech Engineering is committed to the service of our clients' needs. We strive to efficiently provide quality drawings, specifications and studies to allow for smooth project installations. Our staff continuously upgrades its knowledge to keep technologically current on equipment and systems. Continuing education, research of relevant literature, interaction with industry professionals and suppliers, and strict quality control allow us to provide high quality engineering services with continual improvements in the pursuit of excellence.

### **Major Milestones**

Founded in 1982 as a Mechanical/Process Engineering Firm

Added Civil/Structural Capabilities in 1984

Added Instrumentation and Electrical Capabilities in 1987

Began Use of AutoCAD to Modernize Drafting Capabilities in 1988

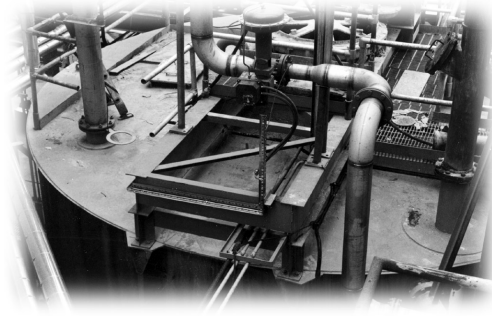
Moved to Present Modern Facilities in 1990

Completed Engineering of \$15 Million Project in 1994

Completed Engineering of \$20 Million Project in 1995

Celebrated 20th Anniversary in 2002

## **OVERVIEW**



**M**ar Tech's primary expertise is the complete detailed design of new systems, rebuilds and retrofits. We have the resources to provide partial or complete engineering services according to our clients' needs.

## CAPABILITIES

### Engineering Disciplines

Process

Mechanical

Civil/Structural

Electrical

Instrumentation

### Industries Served

Chemical Plants

Petroleum Refineries

Power

Pulp and Paper

Lumber Mills

OSB Plants

Plywood Plants

### Additional Services

Engineering Studies

Project Cost Estimates

Computer Aided Drafting

Documentation of Existing Systems

Project Management

Field Engineering

Process Safety Management

HAZOP Reviews





**A** partial listing of clients we have served along with the facility locations is provided below. We will be happy to provide you with more information or references upon request.

## PARTIAL CLIENT LISTING

***Arizona Chemical Company***

Spring Hill, Louisiana  
Oakdale, Louisiana  
Panama City, Florida

***Babcock-BSH***

Germany

***Baker Process***

Salt Lake City, Utah

***Borden Packaging & Industrial Products***

Demopolis, Alabama

***Cajun Electric Power Cooperative, Inc.***

New Roads, Louisiana

***Chicopee, Inc.***

North Little Rock, Arkansas

***Columbian Chemical***

Monroe, Louisiana

***Continental Carbonic***

Monroe, Louisiana

***Dupont, Inc.***

New Johnsonville, Tennessee

***M. G. Dickey Industries***

Bastrop, Louisiana

***Mississippi River Corporation***

Natchez, Mississippi

***Pennzoil-Quaker State Products***

Shreveport, Louisiana

***Procter & Gamble***

Cape Girardeau, Missouri

***Rouse Rubber Industries, Inc.***

Vicksburg, Mississippi

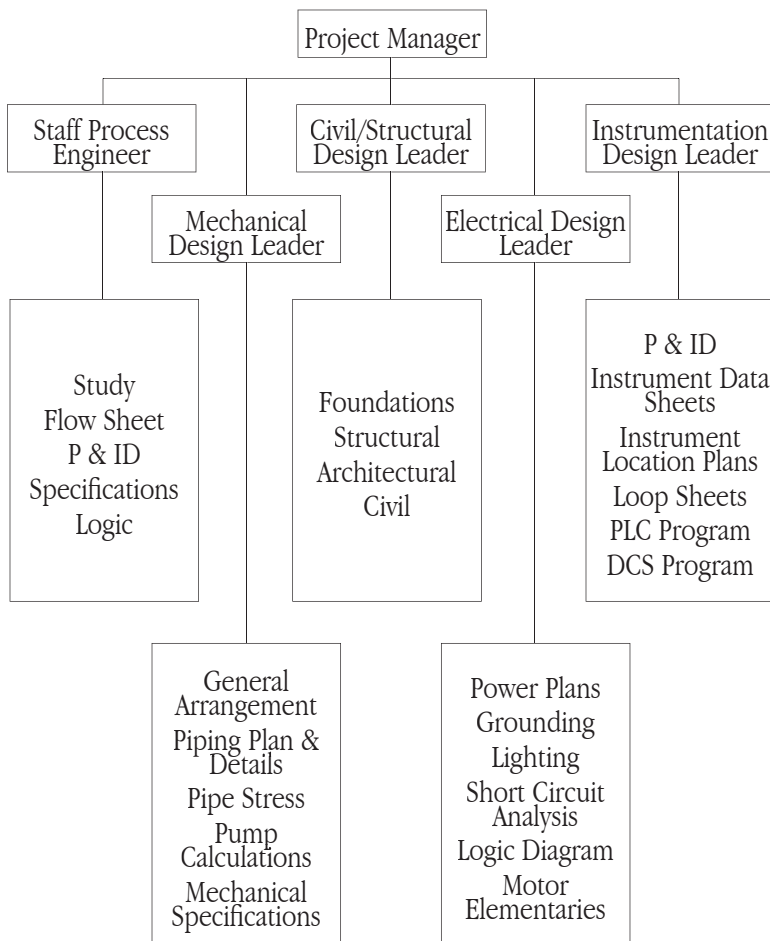
***Southern Cellulose Company***

Chattanooga, Tennessee



## PROJECT ORGANIZATION

The typical project is organized around the discipline design leaders. The design leaders utilize additional engineers, designers, and CAD operators, etc., as necessary to accomplish the work. The project manager organizes the project to deliver the desired design documents within the engineering budget and maintains the primary contact with the client and vendors to insure a smooth flow of information. Smaller projects often have a single design engineer handling all client contact, design, and engineering to efficiently complete the project.





The following constitutes a general sampling of projects engineered by Mar Tech. The costs are approximate construction amounts included to indicate the size of the projects. We will be happy to provide more detailed information on projects in specific industries or specific types of projects upon request.

## PROJECTS

<b>Job Title</b>	<b>Cost</b>
Centrifuges (several)	\$500,000
Chemical Containment (several)	\$100,000
Containment Plan	\$25,000
Water/Oil Separation	\$100,000
Sulfur Recovery Study	\$30,000
Railroad Drainage Study	\$15,000
Thermal Relief Analysis	\$15,000
Salt Evaporator & Dryer Plant	\$15,000,000
Chemical Additives Tank Farm	\$7,000,000
Power Distribution	\$500,000
Steam Sample Nozzles	\$50,000
Plant Run-off Collection Systems	\$700,000
Waste Water Clarifier	\$1,200,000
Evaporators DCS Conversion	\$730,000
Package Boilers (several)	\$1,500,000
Boiler Feed Water Pump	\$750,000
Cool Tunnel Ventilation	\$375,000







<b>Job Title</b>	<b>Cost</b>
Acid Metering System	\$300,000
Air Compressor & Dryer (several)	\$800,000
Thermal Oxidizer	\$1,500,000
Slurry Recovery System	\$4,000,000
Bag Collection Duct Revisions	\$150,000
Dry Ice Plant Study	\$25,000
PH Control with CO <sub>2</sub> Study	\$10,000
Generator & Distribution System	\$750,000
Utility Tie-in for New Generator	\$100,000
Salt Bucket Elevator	\$50,000
Process Development Work for Waste Structural Board Plant	\$100,000
Sludge Press	\$500,000
Cooling Tower Study	\$15,000
Rotary Filter Installation	\$500,000
Bin Conveyor & Bagger	\$250,000
Effluent Line Replacement	\$225,000
Railcar Loading Station with Piping	\$400,000
Acid Tank Containment	\$50,000
Wet Precipitator System	\$5,000,000
Extruder Coating Facility	\$22,000,000

## PROJECTS

